



BUSINESS INTELLIGENCE (BI)

VEHICLE MANUFACTURE

Providing data and analysis to the motor insurance stakeholders is a key service provided by the MRC. Using our BI data repository, the MRC provides a business intelligence tool to all its stakeholders to allow analysis, benchmarking and immediate claims performance monitoring.

WHAT IS BI

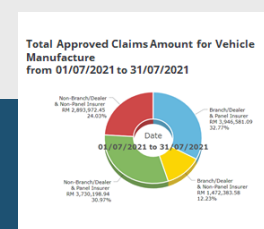
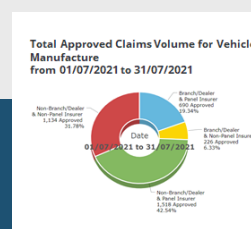
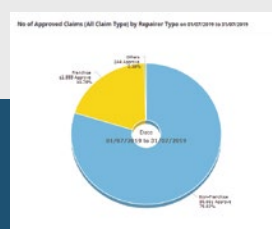
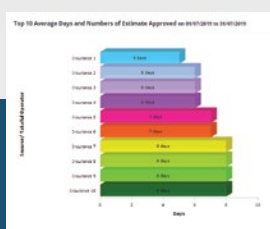
Assisting vehicle manufacture companies, ICAP BI presents industry data for claims, business analyst and marketing teams to analyse performance, areas for improvement and to ensure they have essential cost per vehicle data.

In addition, BI being a consolidated data repository also allows it to provide up-to-date data feed to any fraud detection by any insurance or any regulatory body. For vehicle manufacturers, BI provides the ability to identify vehicle parts supply leakage, price comparisons and assists on accurate parts price setting to ensure the vehicle has the best opportunity to repaired correctly.

BENEFITS

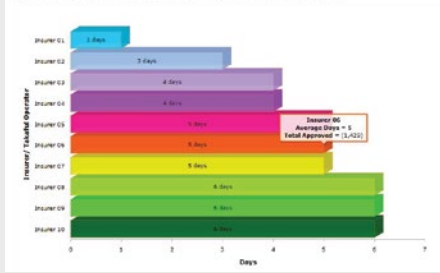
The benefits from the BI system are:

1. MRC is the **ONLY** place where the complete industry Big Data for motor insurance repair claims is held.
2. It is used as a tool to identify the areas of weaknesses and any untoward or unusual occurrences.
3. Provides up-to-date data claims to core systems by any related body.
4. Real time data platform that automates compliance reporting to meet the needs of all stakeholders.
5. Generate faster reporting for better analysis.



MODULES AVAILABLE FOR VEHICLE MANUFACTURE

Top 10 Average Days and Numbers of Estimate Approved on 01/04/2021 to 30/04/2021



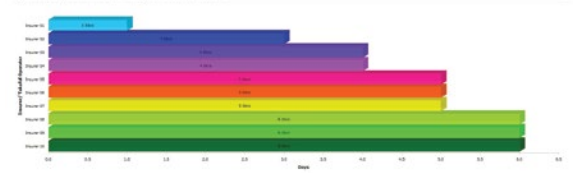
Dashboard

Bird-eye-view business statistics & performance.

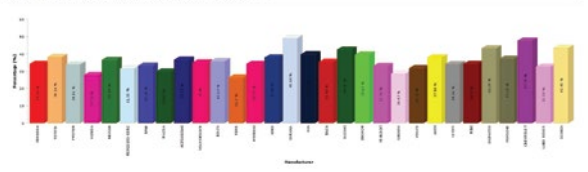
Days

TAT based on Volume of Approved Estimates and Range of Amount Approved Estimates (*can be view by year, YTD).

Top 10 Average Days and Numbers of Estimate Approved on 01/04/2021 to 30/04/2021



Percentage Difference Between Estimates and Approved Amount, by Vehicle Make from 01/04/2021 to 30/04/2021



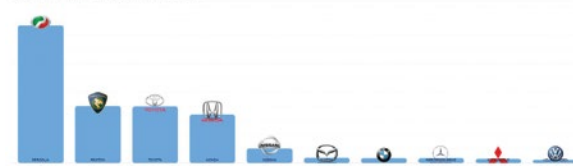
Manufacturers

Analysis of Manufacturer (Model) based on Total Volume of Approved Estimates (Total Estimate, Total Approve & Total Adjuster).

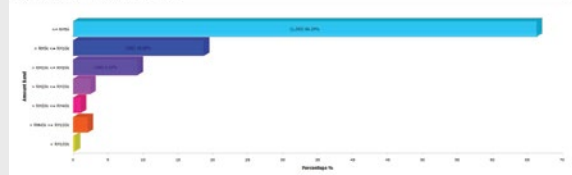
Parts

Number of parts approved based on Manufacturer and type.

Top 10 Manufacturers by Number of Parts Approved on 01/04/2021 to 30/04/2021



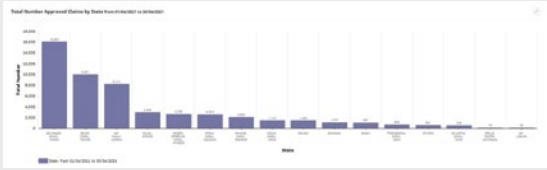
Percentage of Claims by Amount Bands on 01/04/2021 to 30/04/2021



Band

Range of Amount Approved Estimates based on Volume of Approved Estimates.

MODULES AVAILABLE FOR VEHICLE MANUFACTURE

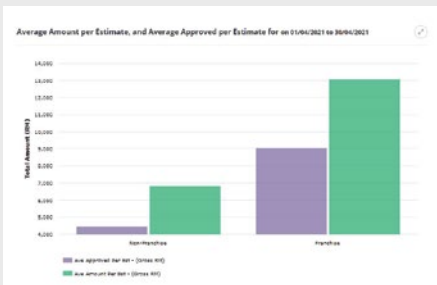
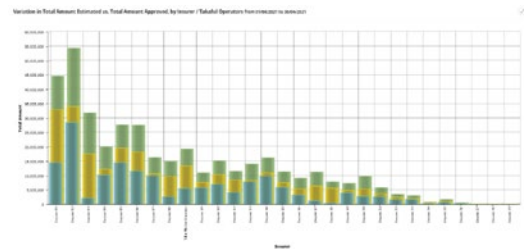


State

Total Volume of Approved Estimates based on State.

Insurer

Analysis by Insurer based on Total Volume of Approved Estimates (*can be view by year, YTD).

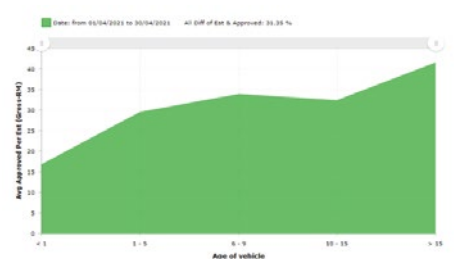


Repairer

Analysis of Repairer based on Total Volume of Approved Estimates (Total Estimate, Total Approve & Total Adjuster).

Vehicle

Analysis by Age of Vehicle on information by age of vehicle for branch / dealers included.



FEATURES AVAILABLE IN BI SYSTEM



Print



View More



Export
(Excel & PDF)



Selection of
Claim of Types