



BUSINESS INTELLIGENCE (BI)

REPORTING SYSTEM

FULL VERSION

Providing data and analysis to the motor insurance stakeholders is a key service provided by the MRC. Using our BI data repository, MRC provides a business intelligence tool to all its stakeholders to allow analysis, benchmarking and immediate claims performance monitoring.

WHAT IS BI

Assisting insurance companies, BI presents industry data for claims, actuarial and marketing teams to analyse performance, areas for improvement and to ensure actuarial departments have essential cost per vehicle data.

In addition, BI being a consolidated data repository also allows it to provide an up to date data feed to any fraud detection system required by any insurance company or any regulatory body. For vehicle manufacturers, BI provides data to analyse areas such as revenue per dealership / branch, parts approved and usage and average claims values per vehicle model.

FEATURES

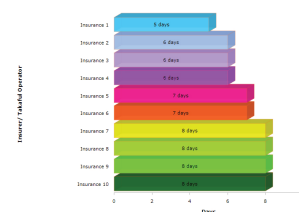
1. Web based system.
2. Real time platform for claims, actuarial and marketing departments.
3. Export data to any format / system.
4. Complete information of data claims.
5. More than 50 reports are available.

BENEFITS

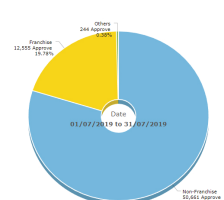
The benefits from the BI system are:

1. MRC is the ONLY place where the complete industry Big Data for motor insurance repair claims is held.
2. It is used as a tool to identify the areas of weaknesses and any untoward or unusual occurrences.
3. Provides up-to-date data claims to core systems by any related body.
4. Real time data platform that automates compliance reporting to meet the needs of all stakeholders.
5. Generate faster reporting for better analysis.

Top 10 Average Days and Numbers of Estimate Approved on 01/07/2019 to 31/07/2019



No of Approved Claims (All Claim Type) by Repairer Type on 01/07/2019 to 31/07/2019

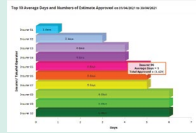


BUSINESS INTELLIGENCE MODULES

LIGHT

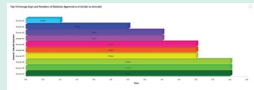
Dashboard

Bird-eye-view business statistics & performance.



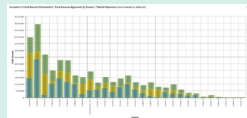
Days

TAT based on Volume of Approved Estimates and Range of Amount Approved Estimates (*can be view by year, YTD).



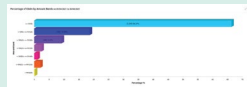
Insurer

Analysis by Insurer based on Total Volume of Approved Estimates (*can be view by year, YTD).



Band

Range of Amount Approved Estimates based on Volume of Approved Estimates.



ADVANCE LIGHT + ↓

State

Total Volume of Approved Estimates based on State.



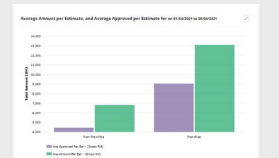
Parts

Number of parts approved based on Manufacturer and type.



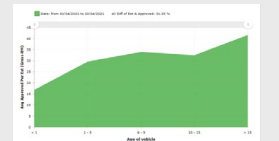
Repairer

Analysis of Repairer based on Total Volume of Approved Estimates (Total Estimate, Total Approve & Total Adjuster).



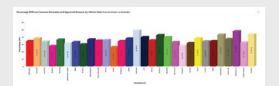
Vehicle

Analysis by Age of Vehicle on information by age of vehicle for branch / dealers included.



Manufacturers

Analysis of Manufacturer (Model) based on Total Volume of Approved Estimates (Total Estimate, Total Approve & Total Adjuster).

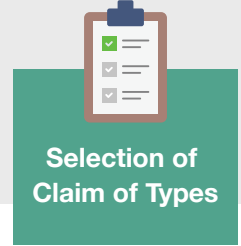
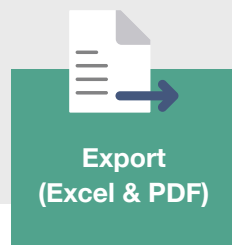
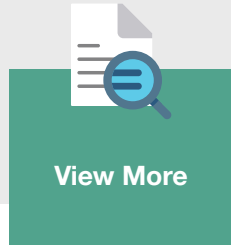
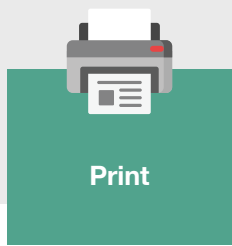


Report

(Multiple Claims) – List of Vehicle Reg No that have many approved claim through the year.

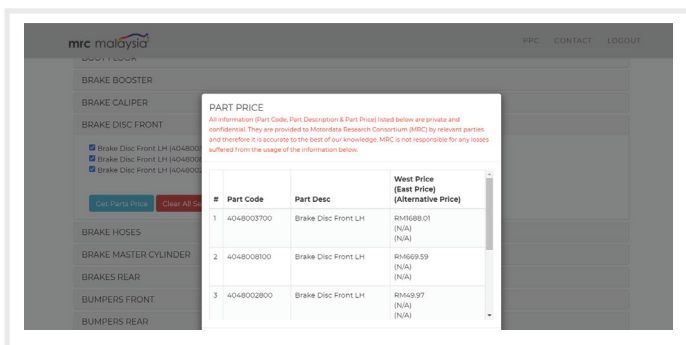


FEATURES AVAILABLE IN BI SYSTEM

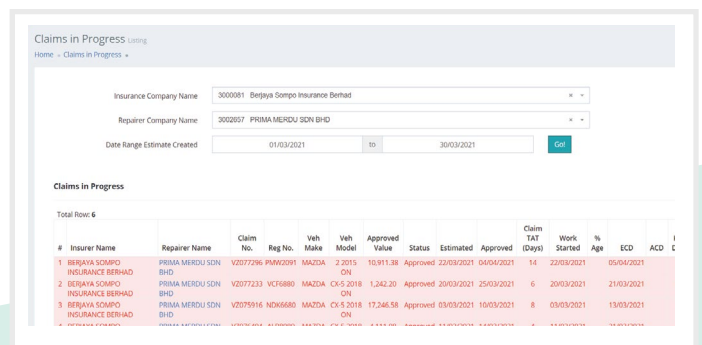


NEW MODULES IN ADVANCE VERSION

PPL



Claim In Progress



- It utilises manufacturers' part numbers and up-to-date retail prices.

- Applying MRC's generic parts descriptions to allow ease of parts identification for the preparation of a repair estimate.

- All information (Part Code, Part Description & Part Price) listed below are accurate to the best of our knowledge.

- Provide facilities to monitor the repair process and communicate with your repairer.
- Search data for selected repairer from dropdown list within a selected date range.
- The available details that can be viewed by insurer are Cycle times, Event and Notes.
- Details are either updated manually or auto-updated from the BodyNet workshop management system.